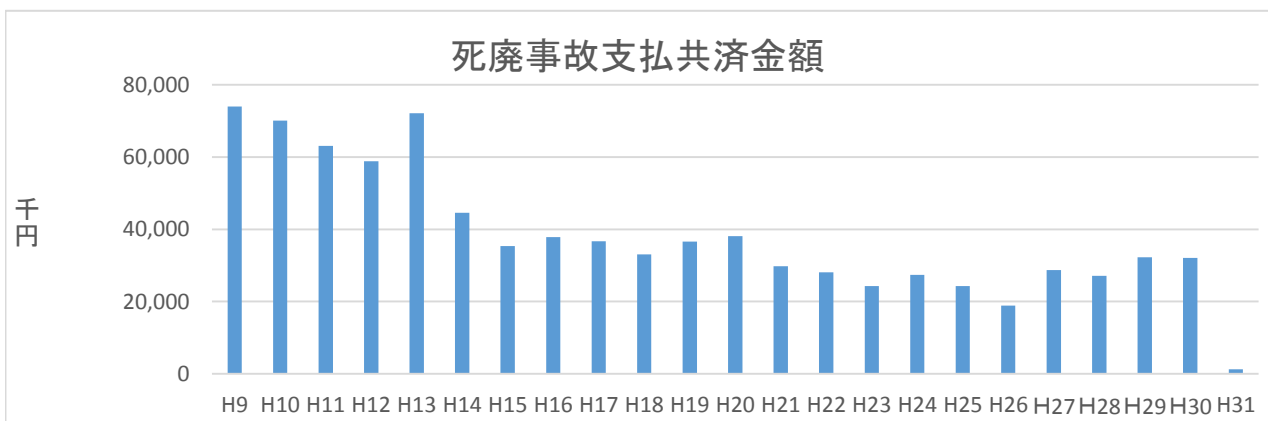
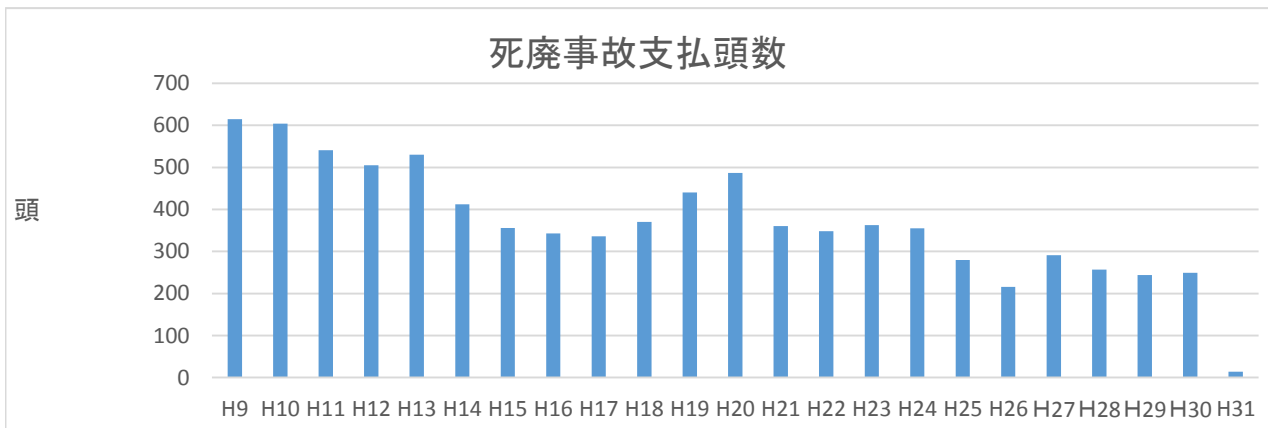
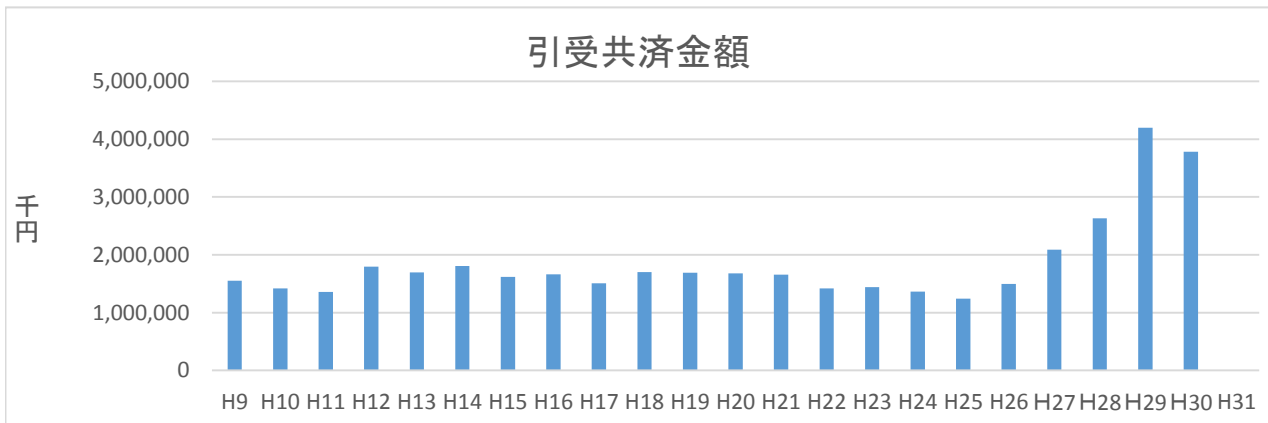
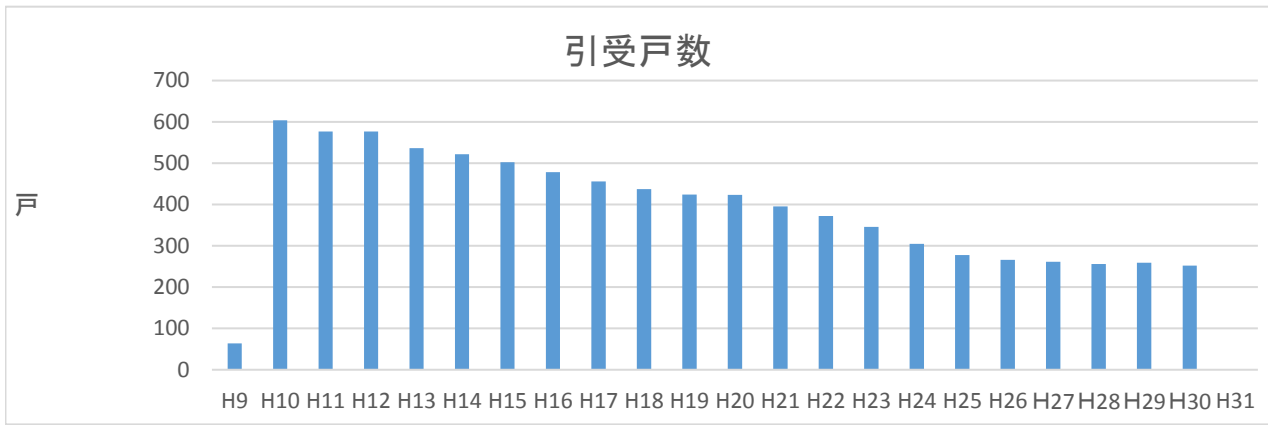


旧家畜共済 肉用牛

年度		引受関係			被害関係				
		戸数	頭数	共済金額	死麁事故		病傷事故		合計
					頭数	共済金	件数	共済金	共済金
西暦	和暦	戸	頭	千円	頭	千円	件	千円	千円
2019	H31	0	0	0	14	1,282	377	5,038	6,319
2018	H30	252	17,981	3,780,329	249	32,108	2,318	28,715	60,823
2017	H29	259	19,312	4,195,077	244	32,261	2,166	26,357	58,617
2016	H28	256	16,660	2,633,157	257	27,113	2,137	24,408	51,521
2015	H27	261	16,021	2,087,839	291	28,701	2,372	27,404	56,105
2014	H26	266	14,983	1,493,702	216	18,902	2,247	25,018	43,920
2013	H25	278	14,295	1,243,700	280	24,305	2,369	26,389	50,694
2012	H24	305	15,193	1,365,151	355	27,413	2,508	27,985	55,398
2011	H23	346	18,777	1,443,213	363	24,307	2,833	30,098	54,405
2010	H22	372	20,741	1,419,500	348	28,069	2,997	30,722	58,791
2009	H21	395	21,158	1,658,285	360	29,755	3,191	35,697	65,452
2008	H20	423	21,070	1,680,007	487	38,109	3,602	42,857	80,966
2007	H19	424	20,567	1,687,305	440	36,631	3,596	41,196	77,827
2006	H18	437	20,029	1,702,923	370	33,035	3,510	40,682	73,717
2005	H17	456	16,594	1,506,205	336	36,699	3,510	41,177	77,876
2004	H16	478	16,534	1,660,986	343	37,827	3,172	36,090	73,917
2003	H15	502	16,946	1,619,128	356	35,320	3,061	34,071	69,391
2002	H14	522	16,994	1,803,302	412	44,592	3,044	35,447	80,039
2001	H13	536	15,179	1,692,732	530	72,060	3,155	37,355	109,415
2000	H12	577	15,924	1,797,240	505	58,791	3,174	36,833	95,624
1999	H11	577	13,698	1,359,120	541	63,050	3,281	36,203	99,253
1998	H10	604	12,929	1,416,883	604	70,046	3,333	35,829	105,875
1997	H9	64	13,697	1,551,976	615	73,965	3,684	39,810	113,775

旧家畜共济 肉用牛



旧家畜共济 肉用牛

